



Subject Selection and Further Studies



Mr. T.F. Ng,

Careers Master





Agenda



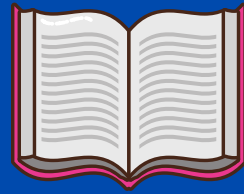
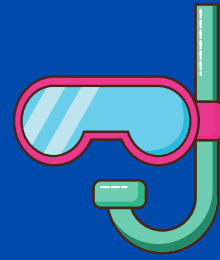
1

Self

2

Curriculum Careers

3



INTEREST

- Books, websites, videos
- Self-directed Search
- Extra-curricular Activities
community service, scouting, treasurer

Self



ABILITY

- Academic Performance
- Skills
creativity, analytical skills, language skills, computational skills
- Parents, teachers and peers

VALUES

- appreciation of diversity in religions and cultures
- wonder and curiosity about peoples, places and environments
- the impact in social, economic, industrial, environmental and technological contexts
- responsible behaviour in controlling personal finances



Self



Curriculum

Technology Education Key Learning Area

Information and Communication Technology Curriculum and Assessment Guide (Secondary 4 – 6)

Jointly prepared by the Curriculum Development Council and
the Hong Kong Examinations and Assessment Authority

Published for use in schools by the Education Bureau
HKSARG
2021
Effective from Secondary 4 in the 2022/23 school year

Students should learn:

vertical motion under gravity

Students should be able to:

- examine the motion of free-falling objects experimentally and estimate the acceleration due to gravity
- present graphically information on vertical motions under gravity
- apply equations of uniformly accelerated motion to solve problems involving objects in vertical motion
- describe the effect of air resistance on the motion of objects falling under gravity

b. Force and motion

Newton's First Law
of motion

addition and resolution
of forces

Newton's Second Law
of motion

Newton's Third Law
of motion

時期	課題	學習要點	說明
隋唐	1. 隋唐治世	<ul style="list-style-type: none">• 開皇、貞觀、開元三朝的治績與盛況• 隋文帝、唐太宗、唐玄宗的歷史評價	開皇、貞觀、開元三朝，政治、經濟、文教、武功各擅勝場，史稱治世。主導三朝政局的隋文帝、唐太宗和唐玄宗，除治績備受歷來論者評騭外，個人操守亦廣受後世關注。
	2. 安史之亂與唐代衰亡	<ul style="list-style-type: none">• 安史之亂與唐朝國運的關係• 安史亂後的政局與唐室衰亡	天寶年間，安史之亂爆發，戰禍連綿八載，關隴河朔慘遭嚴重破壞，唐朝國力自此一蹶不振。唐肅宗因急於求安，倉卒重置河北藩鎮，令安史餘部得以保留實力。唐朝雖藉此再延國祚一百五十多年，然終不免亡於節度使之手。

- describe the effect of a net force on the speed and/or direction of motion of an object
- state Newton's Second Law of motion and verify $F = ma$ experimentally
- use newton as a unit of force
- use free-body diagrams to show the forces acting on objects
- determine the net force acting on object(s)
- apply Newton's Second Law of motion to solve problems involving motion in one dimension

- realise forces acting in pairs
- state Newton's Third Law of motion and identify action and reaction pair of forces



Curriculum

School-based Assessment

Examples

- Biology, Chemistry, Chinese Literature, ICT, Physics, Visual Arts
- usually 20% of the HKDSE result
- practical work/investigations, creative tasks, projects, a portfolio

Curriculum

Teachers

Senior Form
Students

SPC Course
Catalogue



**Jobs and
Occupations**

**University/
Post-secondary
Institution**

SPC



Logistic and Trading



Transportation



Aviation



Innovative Science and Technology



Media and Publishing



Banking and Finance



Real Estate Industry



Accounting



Building and Engineering



Marketing and Public Relations



Law



Design



Administration and Human Resources



Tourism



Public Administration



Education and Training



Social and Public Services



Medical Care



Entertainment and Arts

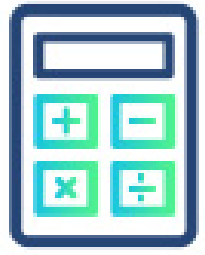


Services and Retail



Other Occupations





Accounting

Accountant

Accounting Clerk

Auditor

Accountant

Duties

The main duties of accountant is to conceive financial plans and manage the company's financial arrangements on the premise of the company's overall interests. The main duties of accountant are as follow:

- Document daily financial transactions
- Prepare annual reports and financial reports
- Maintain accounting controls and financial security
- Organise and prepare tax payments



Working hours

About 48-70 hours a week, it requires work overtime during the peak seasons



Working environment

Work indoors



Personality

- Attention to details
- Patient



Promotion and Reference Salary

Accountant

Approximately \$13,000 or above

Accountant manager

Approximately \$44,000 or above

Chief Financial Officer

Approximately \$70,000 or above

Note: The reference salary and the promotion salary may vary according to the company, experience and ability.

Entry requirements

- Required a bachelor degree in accounting, or equivalent, and a Hong Kong Institute of Certified Public Accountants Qualification Programme (CPA QP) to become an accountant
- For the people who do not have accounting bachelor degree, you can also get the qualification from other way to become an accountant, see from below:
 - study **Accredited Accounting Technician (AAT)** Examination and get **Professional Assessment (PA)** and **Professional Bridging Examination (PBE)**
 - then you can get the qualification of Certified Public Accountants Qualification Programme (CPA QP)
- Good command of spoken and written English and Chinese
- Require a basic computer skills, such as MS Excel

Example of related training and courses

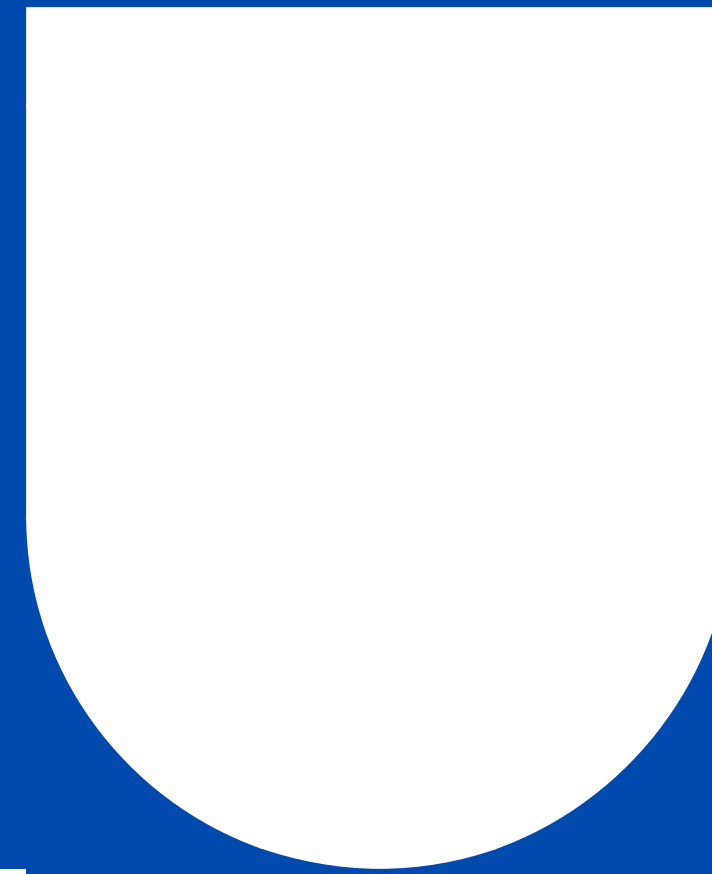
Higher Diploma / Associate Degree

- **College of International Education of Hong Kong Baptist University – Associate of Science (Professional Accountancy)**
- **Hong Kong Institute of Vocational Education, Vocational Training Council - Higher Diploma in Professional Accountancy**
- **Hong Kong Management Association – Advanced Diploma in Professional Accounting Studies (DADAS) and Diploma in Professional Accounting Studies (DDAS)**

Bachelor Degree

- **University of Hong Kong – Bachelor of Business Administration (Accounting & Finance)**
- **City University of Hong Kong – Bachelor of Business Administration (Accountancy)**
- **The Chinese University of Hong Kong – Bachelor of Business Administration in Professional Accountancy**
- **The Hang Seng University of Hong Kong– Bachelor of Business Administration (Honours) in Professional Accountancy**

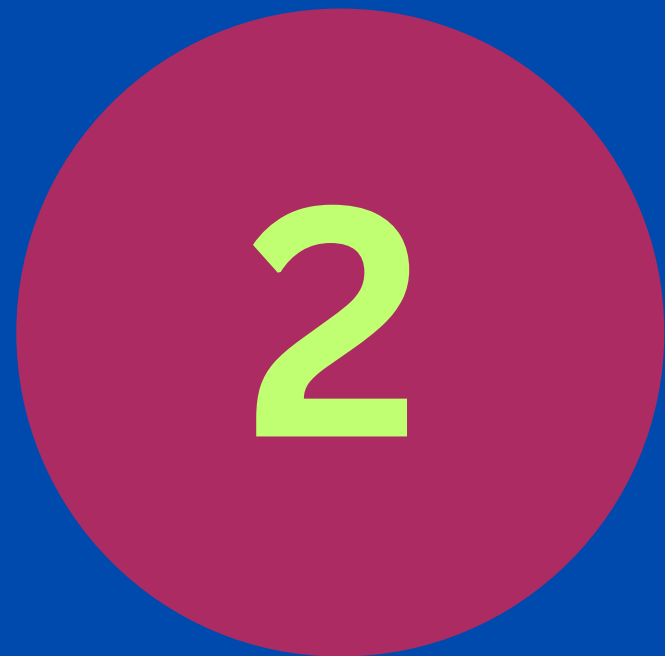




*University /
Post-secondary
Institution*

**Programme
Entrance
Requirements**

**General
Entrance
Requirements**



Chinese Language

English Language

Mathematics

Citizenship and Social Development



Elective 1

Elective 2

General Entrance Requirements



CityU Veterinary Medicine	Biology and Chemistry
HKBU Chinese Medicine and Biomedical Science	Biology or Chemistry
CUHK Medicine	Biology or Chemistry
HKU BBA (Business Analytics)	Biology, Chemistry, ICT or Physics
HKU Engineering	Physics

**Programme
Entrance
Requirements**

The information may be updated by the institutions. Please refer to their official websites for the latest information.

**For 2024
Entry**

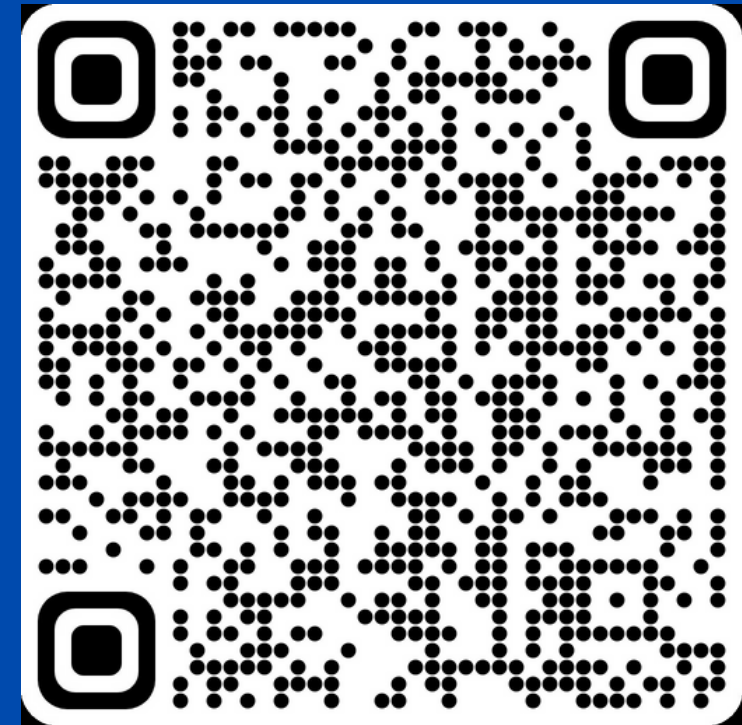
**Programme
Entrance
Requirements**

*The information
may be updated
by the
institutions.
Please refer to
their official
websites for the
latest
information.*

CityU Architecture and Civil Engineering	(x2.5) M1/M2 and Physics
HKBU Game Design and Animation	(x1.15) Visual Arts
CUHK Financial Technology	(x1.75) M1/M2 (x1.5) BAFS, Biology, Chemistry, Economics, ICT, Physics
PolyU Fashion	(x 10) Biology, BAFS, Chemistry, Chinese History, Economics, Geography, Visual Arts (x7) History, ICT, M1/M2, Physics (x5) Other Subjects
HKU Dental Surgery	(x1.3) Biology/Chemistry



Subject Prerequisite
Subject Weighting
Selection Principle



M1/M2



May be included

(if the result is higher than that of a Category C Subject)

- Architectural Studies
- Arts (and Language Education)
- Chinese Medicine
- Design+
- Early Childhood Education and Special Education
- Financial Technology*
- Global Health and Development
- Humanities and Digital Technologies
- Journalism
- Landscape Studies
- Nursing (Advanced Leadership Track)
- Psychology
- Social Sciences
- Social Work
- Surveying
- Urban Studies

Level 3 or above is preferred.

- Arts and Sciences
- Biomedical Engineering
- Business Analytics
- Engineering
- Engineering Science
- Global Engineering and Business
- Marketing Analytics and Technology
- Science Master Class

Level 3 or above is required.

- Data Science and Engineering
- Quantitative Finance

Level 4 or above is required.

- Actuarial Science
- Applied Artificial Intelligence

The information may be updated by the institutions. Please refer to their official websites for the latest information.

M1/M2



Not considered as an elective subject

- Chin + Eng + Math + Best of Bio/Chem + Best 2 Subjects
- If the M1/M2 result is higher than the result of the worst subject, the result of the worst subject will be replaced with ***(0.5 x the worst subject + 0.5 x M1/M2)***.
- If students take two electives and M1/M2, the results of the three subjects will be considered as follows: ***(X1 + X2 + 0.5x M1/M2)***.

The information may be updated by the institutions. Please refer to their official websites for the latest information.



**Imperial College
London**

Hong Kong Diploma of Secondary Education
(HKDSE)

Grade 5 - 5* in relevant subjects. Where Mathematics is required applicants should achieve the required grade in both the Mathematics compulsory and Mathematics Extended 1 or 2 components.



**UNIVERSITY OF
CAMBRIDGE**

Core Subjects

Grades of 5 in all core subjects, and grades of 5* in two or more relevant core subjects.

Please note that for Cambridge courses that require Mathematics and Further Mathematics A Levels, applicants are required to take Extended Module 2 (Algebra and Calculus) Mathematics as part of their core.

For Cambridge courses that require Mathematics A Level, applicants are advised to take either Extended Module 1 (Calculus and Statistics) or Extended Module 2 (Algebra and Calculus) Mathematics as part of their core.

The information may be updated by the institutions. Please refer to their official websites for the latest information.



UCL

Applicants for degree programmes where mathematics is required, a level 5* will be required for the compulsory Mathematics element and a minimum of level 5 for the extended algebra and calculus extended element (the calculus and statistics extended component will not be acceptable for these subjects). For subjects that require an A* at GCE A-level Mathematics, level 5* will be required in the extended component. For these programmes only two further elective subjects will be required.



**UNIVERSITY OF
TORONTO**

Minimum Admission Requirements:

Hong Kong Diploma of Secondary Education (HKDSE): the completed diploma, including at least 2 elective subjects from Categories A and/or C. Subjects should include prerequisites for intended programs. Mathematics Module 1 (Calculus and Statistics) or Module 2 (Algebra and Calculus) is required for programs with the Calculus prerequisite. Applicants who are not completing Module 1 or 2 may present Advanced Level Mathematics or AP Calculus as an alternative. For admission requirements to the Faculty of Applied Science and Engineering, refer to Engineering.

UK University Course	A-level Subject Requirements
Business	(Useful) Business Studies, Economics, Mathematics
Computer Science	(Essential) Mathematics (Useful) Further Mathematics, ICT, Physics
Dentistry	(Essential) Chemistry, Biology, Mathematics/Physics
Engineering	(Essential) Mathematics, Chemistry/Physics (Useful) Further Mathematics
Medicine	(Essential) Chemistry, Biology and/or Mathematics/Physics
Physiotherapy	(Essential) Biology (Useful) Chemistry, Physics, Mathematics
Psychology	(Essential) Biology, Chemistry, Physics, Mathematics (Useful) History